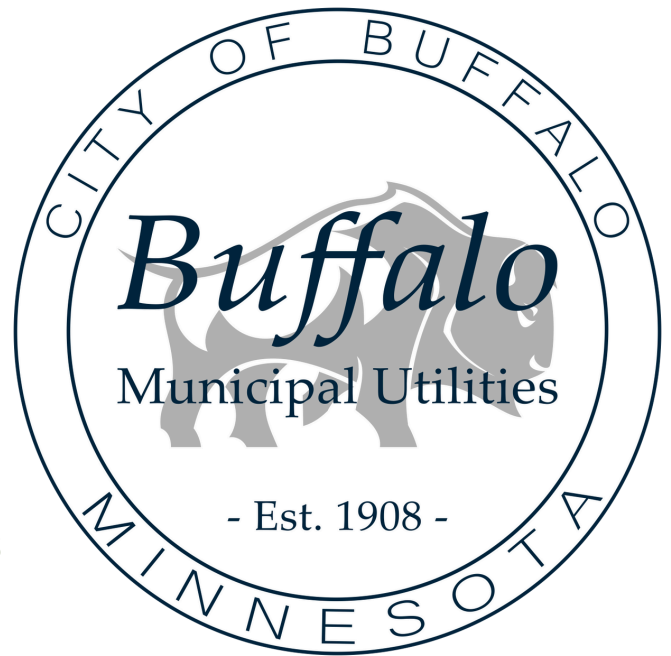


# THE BUFFALO BUZZ

[WWW.CI.BUFFALO.MN.US/157/UTILITIES](http://WWW.CI.BUFFALO.MN.US/157/UTILITIES)  
BMU

**YOUR HOMETOWN UTILITIES  
STRONGER TOGETHER**



## Top News

- \*Letter from the Utility Director
- \*Illicit Discharge
- \*How to Dispose Mercury
- \*Report a Problem: SeeClickFix
- \*AMI: Utiliuse Complete
- \*How to Report an Outage

## More Buzz

- \*Adopt A Catch Basin
- \*Scoop the Poop
- \*Upcoming Events
- \*Report a Sewer Back Up
- \*Buffalo Fiber
- \*and MORE!!!



## From the Utilities Director: Public Power Week

As I write this letter during Public Power Week, I am reminded of the strength and spirit that bring our community together. Here in Buffalo, Minnesota, public power is more than electricity. It is people working together, investing together, and growing together.

Buffalo is a wonderful place. Nestled between Buffalo Lake and Lake Pulaski, our city blends small town warmth with smart growth, all within easy reach of the Twin Cities. We are proud to be the seat of Wright County, a regional hub for commerce, recreation, and civic life. Our vibrant downtown, welcoming neighborhoods, and lakeside parks are places we love and places worth powering well.

During this week, public power utilities across the nation celebrate the local model, utilities owned by the community and governed for the community. The American Public Power Association provides nationwide expertise and innovation that help us grow and deliver reliable service. Here in Minnesota, we are supported by the Minnesota Municipal Utilities Association (MMUA) and the Minnesota Municipal Power Agency (MMPA). These partners advise, guide, and help us maintain a community owned utility with both local and statewide expertise.

This model works because of you, our customers, neighbors, and community partners.

- You trust us to deliver safe and reliable water and power, we invest in infrastructure upgrades, outage resilience, advanced meters, and more.
- You engage through feedback, conservation, and participation, we can plan smarter and keep services affordable.
- You care about Buffalo, we can partner with city government, local businesses, schools, and civic groups to align utility growth with community growth.

When we expand fiber, upgrade substations, replace aging electric, water, sewer lines, flush hydrants, or perform water and sewer plant upgrades we are not just doing utility work. We are helping Buffalo thrive, enabling new business growth, supporting home value, and preparing for future generations.


During Public Power Week, I want to say thank you. Thank you for being part of a model that works, for investing in your community, and for believing that Buffalo's future is worth working toward and being stronger together!


Sincerely,  
Jason Meusburger  
Utilities and IT Director  
Buffalo Municipal Utilities




**Your Hometown Utilities  
STRONGER TOGETHER**

# APPRECIATION OPEN HOUSE FREE EVENT

 Thursday, October 16th

 Utility Campus  
503 Lake Blvd NW

 11:00am - 2:00pm

-  **Free Lunch and Ice Cream**
-  **Kids Zone: Bounce House, Crafts & More**
-  **Bucket Truck Rides**
-  **Utility Equipment and Displays**
-  **Free CIP Energy Conservation Kits**
-  **FUN for Everyone!!!!**

**Please Join Us!!!**

**Learn about and experience Your Community owned Utilities.**



## REMINDER

Please report sanitary sewer backups immediately to the  
City of Buffalo  
Water Reclamation Department.

Water Rec Staff will be deployed to check the main  
lines during the incident.





# Help Protect Buffalo's Waterways: Prevent and Report Illicit Discharges

The City of Buffalo is committed to protecting our lakes, rivers, and streams by keeping our stormwater system clean. One way we do this is by preventing and eliminating illicit discharges—unlawful or improper releases of pollutants into the storm drain system.

## What is an Illicit Discharge?

An illicit discharge is any flow to the stormwater system that is not made up entirely of stormwater. According to the Minnesota Pollution Control Agency (MPCA), these discharges can include pollutants such as chemicals, wastewater, sediment, or yard waste. Common examples are:

- \*Concrete washout
- \*Leaking septic tank
- \*Spilled fuel, oil, grease, or paint
- \*Grass clippings, leaves, and pet waste

Unlike water that goes down sinks or toilets (which flows to a treatment facility), stormwater drains flow directly to our lakes, rivers, and wetlands without treatment. Even small amounts of pollutants can harm water quality, fish, and wildlife.

For more details, visit the MPCA's Illicit Discharge resources

<https://www.pca.state.mn.us> (search "Illicit Discharge").

## What Can You Do?

Never dump anything into a storm drain or waterbody.

Properly dispose of household chemicals, hazardous waste, paints, and oils.

Sweep up grass clippings and leaves—don't blow them into the street.

Pick up pet waste and dispose of it in the trash.

## How to Report an Illicit Discharge

Residents play an important role in protecting Buffalo's waters. If you see a suspicious discharge, odor, or spill going into the stormwater system, please report it right away.

**Non-emergency:** Use the City of Buffalo's new **SeeClickFix** reporting system!

### Emergencies

If you observe a hazardous spill, fire, or other urgent threat to public safety or the environment, call 911 immediately.

## Together for Clean Water

By working together, we can ensure that Buffalo's stormwater system carries only rain and snowmelt—nothing more. Thank you for helping to keep our community's waters safe, clean, and enjoyable for generations to come.

For questions about illicit discharges

or to learn more about the City's Stormwater Pollution Prevention Plan, please contact Beth Opheim at 763-684-5418.

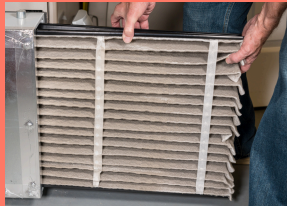




## Energy Conservation Tip

Seasonally cleaning your furnace and regularly changing its filter will help your system run efficiently.

A dirty or clogged furnace air filter restricts air flow, causing your system work harder to heat and cool your home, increasing energy consumption. Check your filter every one to three months and replace when dirty. A clean filter will reduce your energy consumption by 15%, improve indoor air quality, extend the life of your HVAC system and save you money!!!



# Buffalo Fiber

Fast. Local. Reliable.

The City of Buffalo is expanding  
**our Buffalo Fiber!**

A cutting-edge fiber-optic internet service designed for our Buffalo Residents to have speed, reliability, and affordability!

- ✓ Priority installation at NO upfront cost
- ✓ First month FREE
- ✓ Quick and detailed service setup

To claim these benefits,  
complete our short survey!

\*Once completed, you'll receive an email with next steps for full sign-up in your area.

## Scan the QR code



Or Visit our Website and click: **Take Our Survey**  
<https://www.ci.buffalo.mn.us/531/Buffer-Fiber>

Call for Details: 763-373-9272



## SCOOP The POOP

Keep our waters paw-s-itively clean!

### Pet Waste What's the Problem?

Pet waste might not seem like a stormwater problem, but animal waste is one of the many seemingly small sources of pollution that can add up to big problems for water quality, and even human health.

### Pet Waste Management

Pet waste left uncollected is unsanitary and disagreeable for everyone. Pet waste management results in cleaner parks and neighborhoods, with improved aesthetics and lowered potential for diseases to spread. Reducing the amount of uncollected pet waste reduces a significant cause of stormwater pollution.

### ENVIRONMENTAL IMPACTS

**Impacts of pet waste on receiving waters**  
Pet waste left on the ground mixes with stormwater and the contaminants are carried to nearby lakes and rivers, where we swim, fish, and play.

### CLEAN UP YOUR PET WASTE

**Pick it up. Bag it. Throw it in the trash.**  
All pet owners are responsible for properly disposing of their pet's waste. Many of our City Parks have Mutt-Mitt dispensers available.

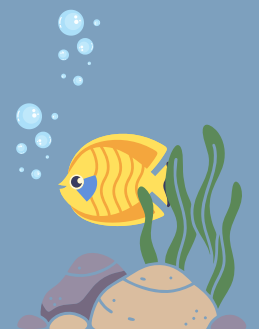
### ANIMAL WASTE POLLUTANTS

**Pet waste contains nutrients & pathogens**  
When pet waste ends up in water bodies it decomposes, releasing nutrients that cause excessive growth of algae and weeds resulting in murky, smelly and possibly unusable lakes and rivers.

### CITY ORDINANCE

**Section 6-6**  
It is unlawful for any owner to suffer or permit an animal to defecate upon public property, or the private property of another, without immediately removing the excrement and disposing of it in a sanitary manner.

If you have any questions, please call or email Beth: 763-684-5418, [beth.opheim@ci.buffalo.mn.us](mailto:beth.opheim@ci.buffalo.mn.us)



November 1st BMU will be introducing a new initiative to the Buffalo Community that will improve the quality of our lakes, streams and ponds. Stay tuned!!!!



## How to Dispose of Household **MERCURY**

Mercury is a dangerous toxin commonly found in household and industrial materials. Mercury does not breakdown into less harmful substances over time and cannot be reclaimed or eliminated once released into the environment. Mercury reduces the efficiency of our wastewater treatment process and negatively impacts human health and wildlife.



### Household Items That Contain Mercury

- **Flourescent Bulbs**
- **Old Thermostats**
- **Thermometers**

Products that still contain mercury are less common but still pose a risk to human health. When these items are broken or thrown away, mercury can escape into the environment.

### What is the City Doing?

Check out our website at:

[ci.buffalo.mn.us/606/Mercury-Regulations](http://ci.buffalo.mn.us/606/Mercury-Regulations)

### Human Health and Environmental Concerns of Mercury

When deposited mercury ends up in lakes or oceans, it can accumulate in fish. Eating contaminated fish is a primary way people are exposed to mercury. As fish eat plankton and smaller fish that are contaminated, mercury concentrations increase. Large fish such as bass, walleye, and northern pike tend to be the most contaminated. Check out the MPCA website at:

[pca.state.mn.us/pollutants-and-contaminants/mercury](http://pca.state.mn.us/pollutants-and-contaminants/mercury)

### Dispose Your Household Mercury Here



Please drop off **MERCURY** containing items at the **Wright County Recycling Facility**.



Wright County  
MINNESOTA

[co.wright.mn.us/162/Compost-Recycling-Facility](http://co.wright.mn.us/162/Compost-Recycling-Facility)





# HOW TO REPORT A NON-EMERGENCY: SeeClickFix

## Report a Problem or Concern

---

### SeeClickFix - Service Requests

SeeClickFix is an application for Buffalo residents to report non-emergency issues to the city, such as potholes, street light outages, overgrown grass, etc.



### Creating your account

You will need to create a log-in the first time you use SeeClickFix. You can report issues by downloading the SeeClickFix app on your iPhone or Android by searching SeeClickFix.

Once you have submitted a request, you will receive updates on the progress via email.

### SeeClickFix On-the-Go

Download the app ([Apple App Store](#) / [Google Play](#)) for easy submissions while you're out and around the city. Photos are encouraged.

### Report an Issue

The City of Buffalo now uses SeeClickFix - a report and tracking tool - to communicate issues that need to be fixed to city departments. When an issue is submitted, the city will assign submitted requests to the appropriate department or service, track response time, and evaluate repeating repairs as a tracking tool.

### Important Notes

1. Please make sure the address provided is the location of the issue being reported.
2. Full name and address are required for reports related to codes compliance. Anonymous reports will not be investigated.
3. Submitting multiple requests on the same issue will not expedite services and can potentially delay repair.
4. SeeClickFix is monitored during regular City Hall business hours: **8:00 am to 4:30 pm, Monday - Friday**. Requests placed over weekends or holidays may not be addressed until the following official business day.





# AMI UPDATE NOTICE

The company Utiliuse has completed their project in the City of Buffalo. Customers will no longer be receiving phone calls from Utiliuse.

The remaining meter installations will be done by City of Buffalo Electric and Water Departments.



## Fall Hydrant Flushing

The City of Buffalo Water Department will be flushing hydrants Monday, October 6, 2025 through Friday, October 17, 2025. Hydrant flushing is done in the spring and fall to ensure that hydrants are in working order for fire protection and to remove mineral deposits that may accumulate in the water distribution system.

In order for the Water Department to complete this work in a safe and orderly fashion, we request that you...

- Please use caution when approaching flushing operations.
- Please refrain from doing laundry between the hours of 5:00 am to 7:00 pm. Be sure to check the color of your water prior to doing laundry since discolored water may stain clothing, particularly whites.
- Please limit household water use, as well as outside watering and irrigation, when you see flushing operations in your neighborhood. This will help minimize household water discoloration.

A progress map will be posted on the City of Buffalo website and updated daily. You will be able to see when your neighborhood has been flushed.

We apologize for the inconvenience and appreciate your cooperation. If you have any questions or experience discolored water after these dates please contact:

Customer Service Director - Cara Hesse  
Phone: 763.684.5432  
Email: [cara.hesse@ci.buffalo.mn.us](mailto:cara.hesse@ci.buffalo.mn.us)

website: [ci.buffalo.mn.us](http://ci.buffalo.mn.us)



## 2025

### Residential & Commercial Rebates

\*Lighting, Appliance, AC, Irrigation, Tree, Shrub and MORE

## STILL AVAILABLE

Check out BMU's Electric and Water Rebates at [ci.buffalo.mn.us/159/services](http://ci.buffalo.mn.us/159/services)



# POWER OUTAGE: WHAT to DO

Safety is Buffalo Municipal Utilities' priority during power outages or when recovering from a storm.

- ⚡ Please be aware of electrical hazards.
- ⚡ Stay away from downed power lines.
- ⚡ Be sure to report branches on lines that are arcing or sparking, even if your power is still on.

Buffalo Municipal Utilities has 24/7 On-Call Crews to handle all Emergency Situations.

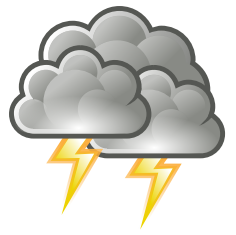
When reporting an outage please call 763.682.1001, follow the prompts and leave a message.

Messages are monitored.

Crews are alerted and immediately deployed.

Due to the high-risk nature of the work, and to safely do their job, the crew needs to remain focused, so please leave a message.

The Crew will continue working until ALL power is restored!



**FALL WORD SEARCH**

S G I V I S G W O R C E R A C S  
C O L L A H S C A E I T H R E W  
P U M P K I N O K S D E R O R O  
T R L U N S R A L L E R D C O R  
H D E M L B O N F I R E I H N A  
A C A R L O C A R A E L C E E N  
N O V E T H A N K S G I V I N G  
T R L P H A G O U E R I F Y A E  
S W L M A L C R N L E A V E S T  
E C A A N L P P A P H A L L O C  
V I B H F O O T B P I D E L H O  
R E T A E W S H R A N A R O A R  
A D O Y T E N A N R E S T W R M  
H O O R H E D I R Y A H S E V U  
E R F R E N E Y O U R F N O B P  
E N E N A E H S C R O W O L L E

**WORD BANK**

ACORNS	CORN	HARVEST	RED
APPLES	FOOTBALL	HAYRIDE	SCARECROW
BONFIRE	GOURD	LEAVES	SWEATER
CIDER	HALLOWEEN	PUMPKIN	THANKSGIVING
		ORANGE	YELLOW

www.acmwwstheholidays.com

**Howl-o-ween  
BARK IN THE PARK!**



**10AM-12PM | SATURDAY, OCT 25 |  
GARY MATTSON DOG PARK**

- 🐾 Giveaways!
- 🐾 Treats for you and your dog
- 🐾 Learn how pet waste can impact water quality
- 🐾 Learn smart salting tips to keep your pup's paws safe this winter

**PRIZES FOR:**  
BEST DOG COSTUME  
&  
BEST DOG/OWNER COSTUME DUO



# Easiest Ever Crockpot Lasagna

## INGREDIENTS

- 1 lb. Extra Lean Ground Beef
- 1 Onion diced
- 2 Cloves of Garlic minced
- ½ t Salt and Pepper each
- 2 Jars of Pasta Sauce (Use your Favorite)
- 1 lb. Lasagna Noodles, uncooked
- 1 16oz Tub Ricotta Cheese
- 2 c Mozzarella Cheese grated
- ½ c Water



## INSTRUCTIONS

- In a large fry pan brown ground beef over med-hi heat. When beef is almost cooked through, add onions, garlic and one jar of sauce, stir to combine.
- Spray crock pot with cooking spray, then layer in a bit of meat sauce. Add a layer of lasagna noodles. You may need to break them into pieces to fit. Then add some ricotta and mozzarella cheese and another layer of meat sauce and noodles. Repeat until the slow cooker is full - usually 3 total.
- Pour the other jar of sauce over top of lasagna, then add mozzarella to top. Pour water in on the sides. Cook on high for 3 hours or low for 6 hours.
- Garnish lasagna with basil/parsley.  
Serve and Enjoy!

## Why Buffalo Fiber?

**Buffalo Fiber** brings you **lightning-fast speeds** that will reshape the way your family connects, streams, works and plays.

Imagine **uninterrupted** streaming, faster downloads and uploads and seamless gaming

**ALL from the BEST INTERNET in TOWN!**

Here's the **BEST** part: Buffalo Fiber isn't just another internet provider. We are a community-owned utility, meaning **we're invested in your success and the success of our entire town.** That commitment means **competitive rates** with **reliable service** you can count on.

With Buffalo Fiber, you'll get **customer service - real people**, right here in Buffalo, **ready to help you with a smile.**

We offer **3 great speeds** and monthly rates to **fit your family's needs** along with top-of-the-line Calix equipment that is included with your service at no extra charge.

**Sign up today you will receive FREE installation!**



**Call today!!! 763.373.9272**

