



CITY OF BUFFALO, MINNESOTA

Irrigation Systems

Yes! A permit is required to install Irrigation Systems in the city limits of Buffalo.

To ensure the City of Buffalo is well-positioned with its aquifers for present and future residents alike, we have an irrigation permitting process.

WHAT DOES THIS MEAN FOR YOU?

First and foremost, all new and existing homes are now required to submit an irrigation permit if the homeowner would like an irrigation system to be installed on their property. Irrigation systems now require a new/separate water meter to be installed as shown on page 2 of this flyer. **NOTE:** Failure to provide proof of irrigation permit may result in fines.

Residential outdoor water use in the US accounts for nearly 8 billion gallons of water each day, mainly for landscape irrigation. Experts estimate that as much as 50 percent of this water is wasted due to overwatering caused by inefficiencies in irrigation methods and systems. WaterSense labeled irrigation controllers can significantly reduce overwatering by applying water only when plants need it.

<https://www.epa.gov/watersense>

IRRIGATION CONTROLLERS

The City of Buffalo now requires all irrigation systems to utilize EPA WaterSense approved-products for all Irrigation Controllers. *WaterSense labels two types of irrigation controllers that can help homeowners and businesses make their irrigation scheduling more water-efficient: **weather-based irrigation con-**

trollers use local weather and landscape conditions to tailor watering schedules, and **soil moisture-based irrigation controllers** (also known SMSs) monitor moisture levels in the soil to prevent irrigation when water is not needed.

Both technologies allow watering schedules to better match plants' water needs. With proper installation, programming, and maintenance, homeowners and businesses can use WaterSense labeled controllers instead of clock-based controllers on their irrigation systems, and not worry about wasted water.

SPRINKLER BODIES

*The sprinkler body is the exterior shell that connects to the irrigation system piping and houses the spray nozzle that applies water on the landscape. Some models of sprinkler bodies can control water pressure at the inlet to the nozzle, resulting in effective performance of their associated spray nozzles.

Landscape irrigation sprinklers are often installed at sites where the system pressure is higher than what is recommended for the sprinkler nozzle. This can lead to excessive flow rates, misting, fogging, and uneven coverage.

WaterSense labeled spray sprinkler bodies with integral pressure regulation can reduce water waste by providing a constant flow at the sprinkler nozzle. Additionally, when the sprinkler body maintains a pressure near its optimal operating pressure, the connected nozzle is better able to generate the right amount of water spray and coverage for more uniform distribution of water across the landscape.

As with all WaterSense labeled products, spray sprinkler bodies must be tested and independently certified to ensure that they meet EPA's criteria for efficiency and performance.

** Information regarding Irrigation Controllers and Sprinkler Bodies taken directly from <https://www.epa.gov/watersense>*



More Questions? Contact Us!

permits@ci.buffalo.mn.us
212 Central Avenue, Buffalo MN 55313
Phone 763-682-1181



KNOW AND FOLLOW THESE WATER RESTRICTIONS

Restrictions apply to **ALL** City of Buffalo businesses and residences, even if you water from a lake, a storm pond, or your City's water source.

To conserve water resources and allow the City's water system flexibility in meeting peak demands, watering restrictions are **always** in effect from **May 1st – October 1st following an odd-even pattern. Hours for watering are always 7pm-7 am.** If your home or business address ends in an odd number, water on odd-numbered calendar days; even numbered addresses water on even-numbered days. **Automatic irrigation systems should be adjusted accordingly.**

30-DAY WATERING EXEMPTION

If you have new sod, seed, or landscaping, fill out the exemption form if you wish to water 30 consecutive days. These

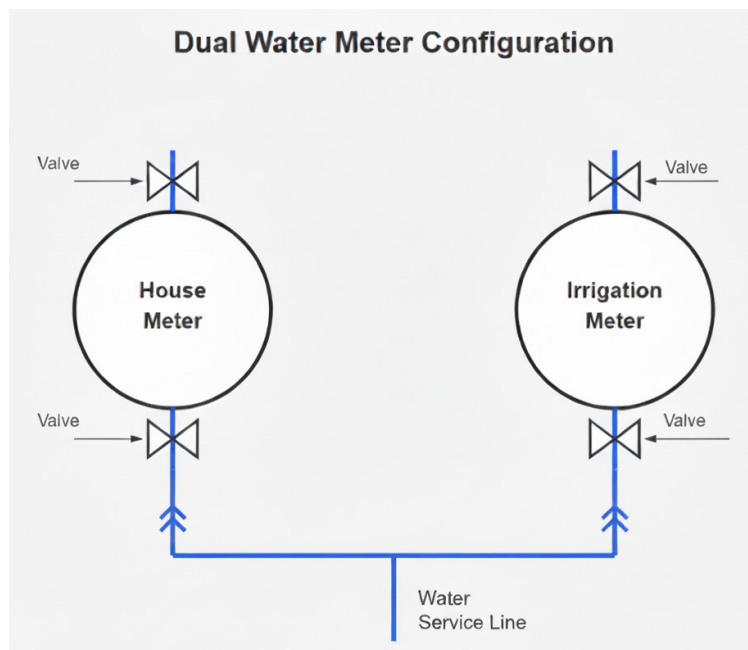
forms are available at City Center, on our website: www.ci.buffalo.mn.us or call Cara Hesse at 763-684-5432.

After your 30-Day Exemption is complete, contact Cara Hesse for an evaluation of the lawn condition. IF weather and aquifer conditions allow it, there may be a provision for additional time (yes, an additional exemption form will be required). Otherwise, you simply continue with the odd-even watering restrictions according to City Code.

ENFORCEMENT

Please make every effort to conserve water!

Failure to comply with these restrictions will result in a water surcharge on your utility bill. These surcharges increase with each violation. Subsequent violations will result in a surcharge to the monthly utility bill for the property.



Permits@ci.buffalo.mn.us
212 Central Avenue, Buffalo MN 55313
Phone 763-682-1181

